

## The Entrenched Reality

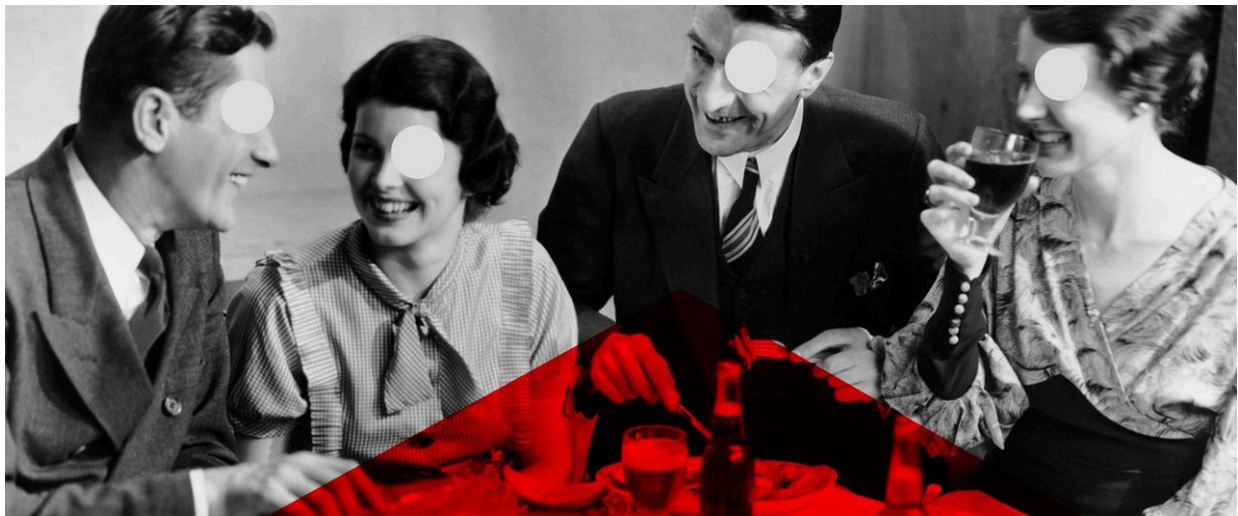
### The Heavy Cost of Industrial Livestock

Over the past half-century, the exponential growth in global meat demand has given rise to Industrial Carnism—a system characterized by high efficiency but profound cruelty. This shift has brought forth undeniable negative impacts:

- Slaughter and Confinement: Life is reduced to mere data on a production line, with its value defined solely by output. Billions of animals spend their lives in cramped spaces, existing only as units in a mechanical journey toward their end.
- Ecological Imbalance: The livestock industry has become a primary driver of global freshwater scarcity, land exploitation, and excessive energy consumption. To maintain current levels of meat production, humanity is incurring a massive "ecological debt."

### The Meat Paradox

Within this industrialized system, psychologists identify The Meat Paradox: a state of cognitive dissonance where humans express deep compassion for animals while simultaneously consuming industrially slaughtered meat without hesitation. To alleviate moral guilt, we mentally sever the connection between "the animal" and "the food," rationalizing consumption as a biological necessity. Often, we attempt to compensate for this unease through symbolic gestures, such as paying a premium for animal welfare products.

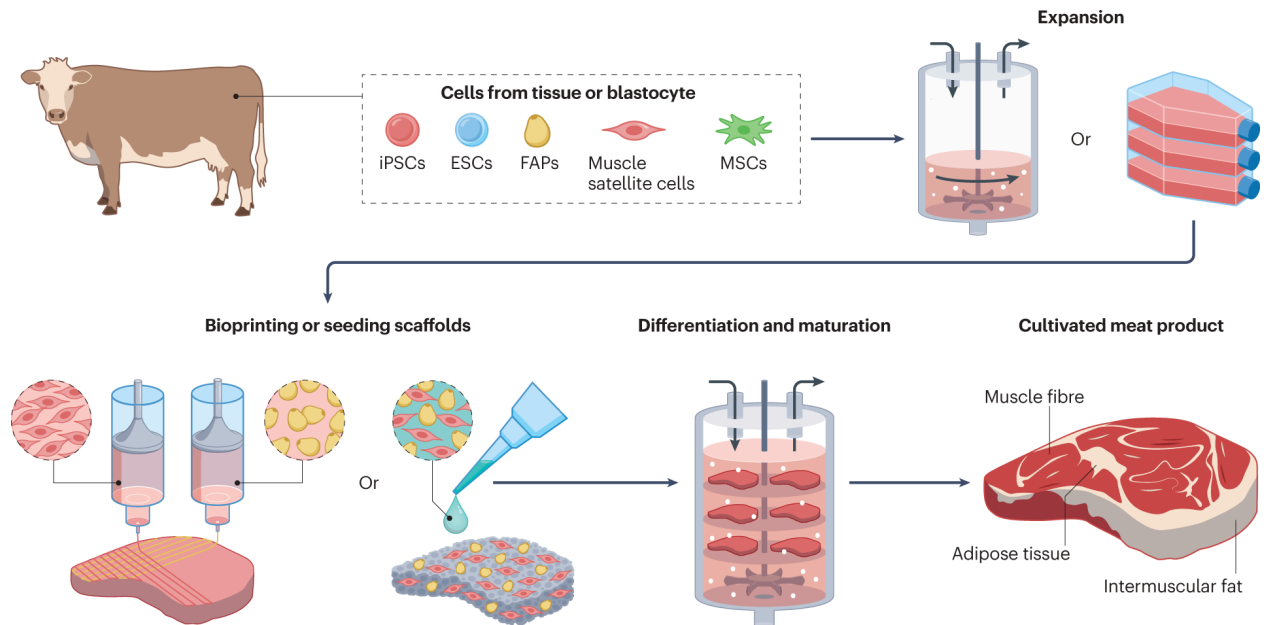


(Image Source: BBC)

# The Conceivable Future

## Cultivated Meat Technology

Cultivated meat is produced by harvesting animal stem cells and inducing their differentiation and proliferation into muscle and adipose tissues within a laboratory setting. In this foreseeable future, technological breakthroughs have overcome previous cost barriers, leading to a society where cultivated meat is the cornerstone of food culture.



(Image Source: Nature)

## The Residual Captivity

Despite these advancements, cultivated meat still relies on laboratory animals as cell donors. While these animals are spared from slaughter, they are still treated as biological factories—their existence confined to functional production rather than being truly "loved."

## Ethics and Morality

As civilization advances, ethical standards for carnivory have risen to unprecedented heights. Consequently, society is eager to seek superior and more empathetic sources for cultivated meat cells—moving beyond mere survival toward a deeper moral alignment.

# Core Hypotheses

## The C-Project (Caress | Carnivore | Cells)



**C-Project** introduces a **New Carnivorous Paradigm** centered on a provocative question: What if our beloved companion animals became the primary source of our protein? This model achieves a "slaughter-free" existence, completely exempt from all forms of sacrifice. It posits that cells harvested from animals in a state of relaxation and happiness possess superior differentiation potential, resulting in high-quality cultivated meat for the global market. The project is built upon three pillars:

- **Affectionate Cell Sourcing:** By transforming the source of cultivated meat from "laboratory animals" to "beloved pets," the harvesting process becomes an extension of daily intimacy. Using a specialized **Cell Collection Kit**, users collect cells through routine acts of grooming and stroking.
- **Painless Bio-Cultivation:** Utilizing **iPSC (Induced Pluripotent Stem Cell)** technology, somatic cells are acquired through non-invasive, painless procedures, entirely eliminating physical distress for the animal.
- **Reciprocal Loop:** This system establishes a sustainable, affection-based incentive mechanism. Pet owners provide cell samples on a monthly basis and, in return, receive financial rewards, creating a symbiotic cycle of care and contribution.

In a future defined by resource scarcity, this decentralized model further minimizes environmental impact by removing the need for dedicated, large-scale cell donor populations, integrating food production into the existing fabric of domestic life.

# System Details

## Cell Collection Kit

To realize the vision of an ethical carnivorous future, we have developed a comprehensive suite of professional tools designed for seamless monthly cell collection. This kit forms the foundation of the **C-Project**, ensuring that cell sources are derived exclusively from stress-free, happy companion animals.



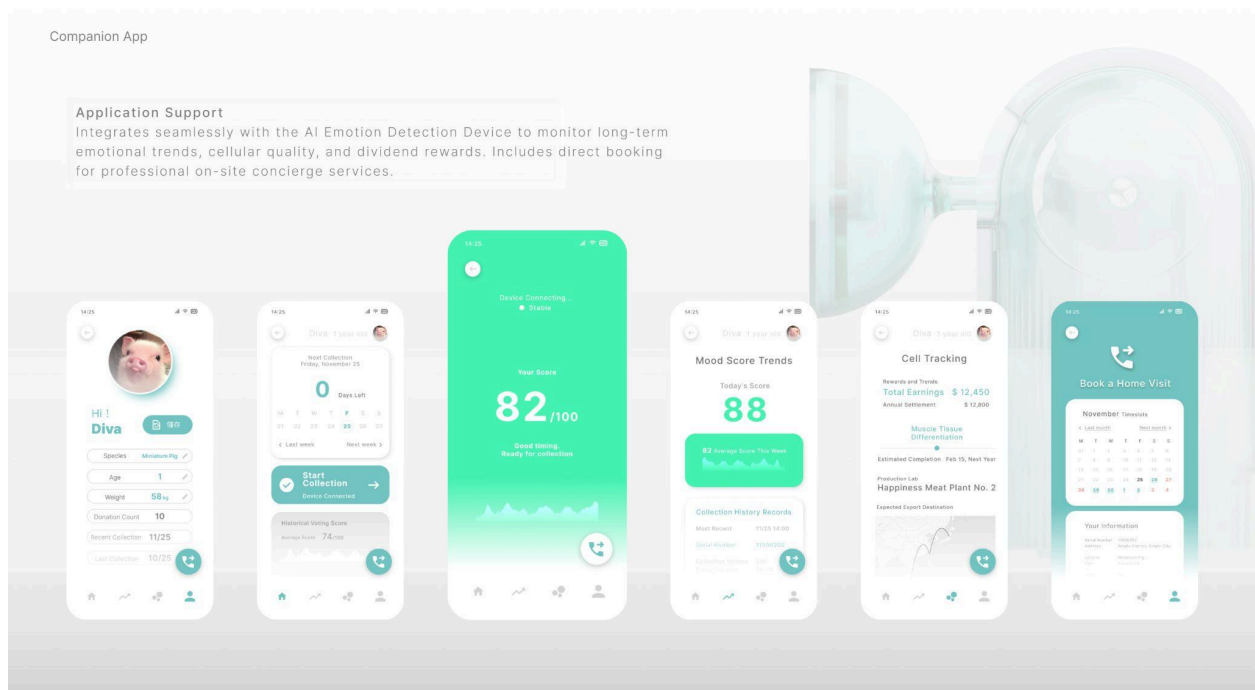
- **AI Emotion Detection Device:** Equipped with a 40-degree adjustable wide-angle lens, this device precisely captures an animal's behavioral traits, including subtle expressions and physiological signals. The integrated lighting system at the base changes color based on real-time AI analysis. This feature ensures that collection only occurs when the animal is in a state of relaxation and pleasure, guaranteeing cell quality and stability.
- **Combs:** The kit includes two distinct types of combs (e.g., a massage comb and a grooming comb), designed to subtly disguise the collection process as routine grooming and massage rituals. These combs can be used independently to foster a positive emotional association with the tools.
- **Collection Handle:** As the critical collection component, the handle is equipped with specialized, ultra-fine collection needles that must be manually triggered by the user at the precise moment. When the detection device indicates a stable emotional state with a green light, a corresponding indicator on the handle illuminates. The user must then release the **Safety Switch** and press the **Button** to trigger the collection.
- **Cell Preservation Capsules:** A one-year supply of 12 capsules is provided, each containing professional-grade cell preservation solution. The bottles are labeled with the specific month and a unique barcode to ensure traceability and biological activity.

## Standard Operating Procedure (SOP)

1. **Preparation:** Select the appropriate comb and install it onto the handle.
2. **Installation:** Retrieve a capsule and insert it into the slot at the rear of the collection handle.
3. **Detection:** Position the emotion detection device.
4. **Grooming:** Begin grooming the animal until the detection device analyzes a stable emotional state and emits a green light.
5. **Collection:** Upon seeing the green light and handle indicator, disengage the safety switch and press the button to trigger the micro-collection needles.
6. **Preservation and Delivery:** Return the capsule to its protective case and store it at 4°C. Schedule a specialized courier service through the app for sample retrieval and subsequent cultivation.

## Companion App

This integrated application serves as a comprehensive dashboard, tracking cell quality, production progress, and displaying cumulative earnings and dividends in real-time. Crucially, it records the emotional trends of companion animals and provides a portal for scheduling professional, on-site services.



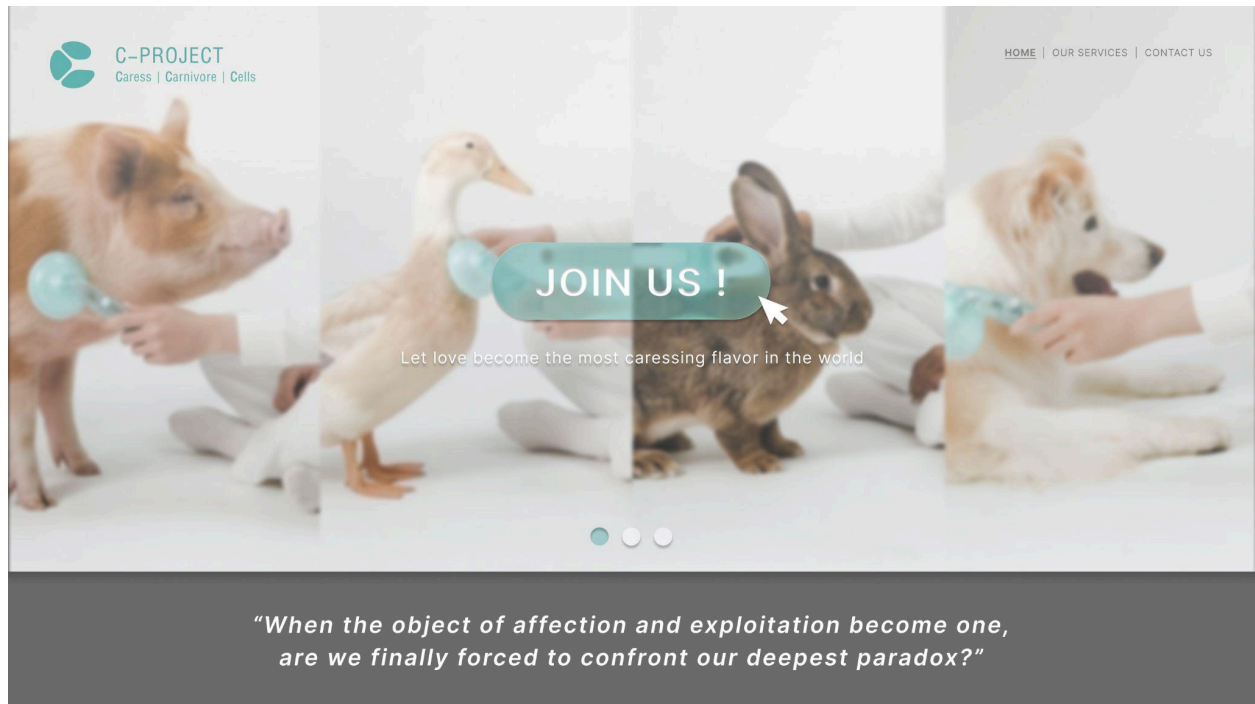
## Reflections

### Ethical Paradoxes and the Behavioral Shift in Design

The design language of C-Project is not merely a technical presentation; it is a physical manifestation of complex psychological mechanisms. Through the following core components, the project provokes a profound dialectic on the dual identity of the human as both "caregiver" and "exploiter."

- **AI Emotion Detection Device (from physiological care to psychological surveillance):** This device symbolizes the evolution of how we define animal welfare. In a contemporary ethical framework, affection for animals transcends basic physical needs, extending into meticulous emotional monitoring. However, in this project, emotional analysis becomes a critical metric for exploitation. When the device emits a "green light" signifying happiness, that "pleasure" is simultaneously appraised—it becomes the threshold for triggering the needle and acquiring high-quality cells. This design implies a chilling correlation: the more an animal feels happy and relaxed, the higher its economic value as a biological resource.
- **The Capsule (a vehicle of profit in painless extraction):** As the medium for sample transport, the Cell Preservation Capsule essentially carries the profit extracted from the animal. Although iPSC technology achieves a "painless and harmless" physiological process, it reveals an immutable truth: humans are still actively seizing biological traits. Life is transformed into a labeled, quantifiable commodity, further blurring the boundaries of "predation."
- **The Collection Handle (the paradox of active triggering):** The crux of the system lies in its manual operability. The handle lacks any automated collection function, meaning every harvest must be completed by the owner. During the intimate ritual of grooming and massage, the owner must actively disengage the safety lock and press the trigger while feeling the animal's warmth. Within a single object and a single gesture, love and exploitation are no longer opposites but exist in a simultaneous, composite state.

## If Paradox Becomes Routine



The emergence of C-Project relies on a collective yearning among owners, producers, and consumers for a higher moral ground. As society pursues "zero-slaughter" and "absolute-happiness" as the origins of meat, traditional violent slaughter shifts toward a more concealed form of emotional exploitation. From industrial livestock to C-Project, the essence of exploitation remains unchanged: the animal remains a passive subject of extraction.

C-Project does not aim to provide a perfect ethical solution for carnivory; instead, it stares directly into the deepest contradictions between humans and animals. By requiring us to harvest cells from our beloved companions with our own hands, this experiment ultimately forces us to confront a haunting question: When the boundaries between love and exploitation vanish, does C-Project pursue the animal's happiness, or merely our own psychological comfort?

This redefinition of roles within carnivorous culture seeks to ignite profound reflection on the complex and evolving relationship between humans and animals today.

