

PROJECT CATEGORY:	5 - Special Projects
BUILDING TYPE:	Bivouac
COMPLETION DATE:	2015
LOCATION:	Skuta Mountain, Slovenia
USE OF BUILDING:	Mountaineering Shelter

DESIGN INTENT:

Designed for an alpine site on Skuta Mountain in Slovenia, this cabin offers an intimate refuge for eight visitors nestled in the scenic Alps.

Distilling the bivouac down a mountain shelter of bunks and views, the building shifts its roof line like a series of mountain peaks, shedding snow and framing distant scenes.

Honoring the client's commitment to sustainability, the design minimizes environmental impacts: visually, gray, glass reinforced concrete cladding blends into the mountain's stone, and performatively, natural ventilation, robust insulation for cold nights, and no electricity preserve the shelter's natural setting.

Occupying a minimal footprint in the mountains, the design consists of three modules, in part to allow for transport and also to programmatically divide the space. Deployed by helicopter as three modules, the building was joined onsite into one mass. The first module is designated for entry, storage and preparation of a modest dinner. The second module allows for both sleeping and socializing, with beds that face each other for communal eating and gathering. The last is module is mainly for sleeping, offering two levels of bunks. From both sides of the shelter, one can experience the panoramic views of both Skuta and the valley. In contrast to the thick gray cladding of the exterior, the interior is a warm wood.

Borne from the Slovenian Alps, the bivouac is a shifting series of peaks, blending seamlessly with the surrounding environment and providing scenic views for mountaineers who venture inside.

PROJECT DATE:	2015
PROJECT SIZE:	200 sq. ft
SITE CONDITIONS:	Skuta Mountain, Slovenia
BUDGET:	\$80,000



EXTERIOR



EXTERIOR



EXTERIOR



EXTERIOR



EXTERIOR



EXTERIOR



INTERIOR



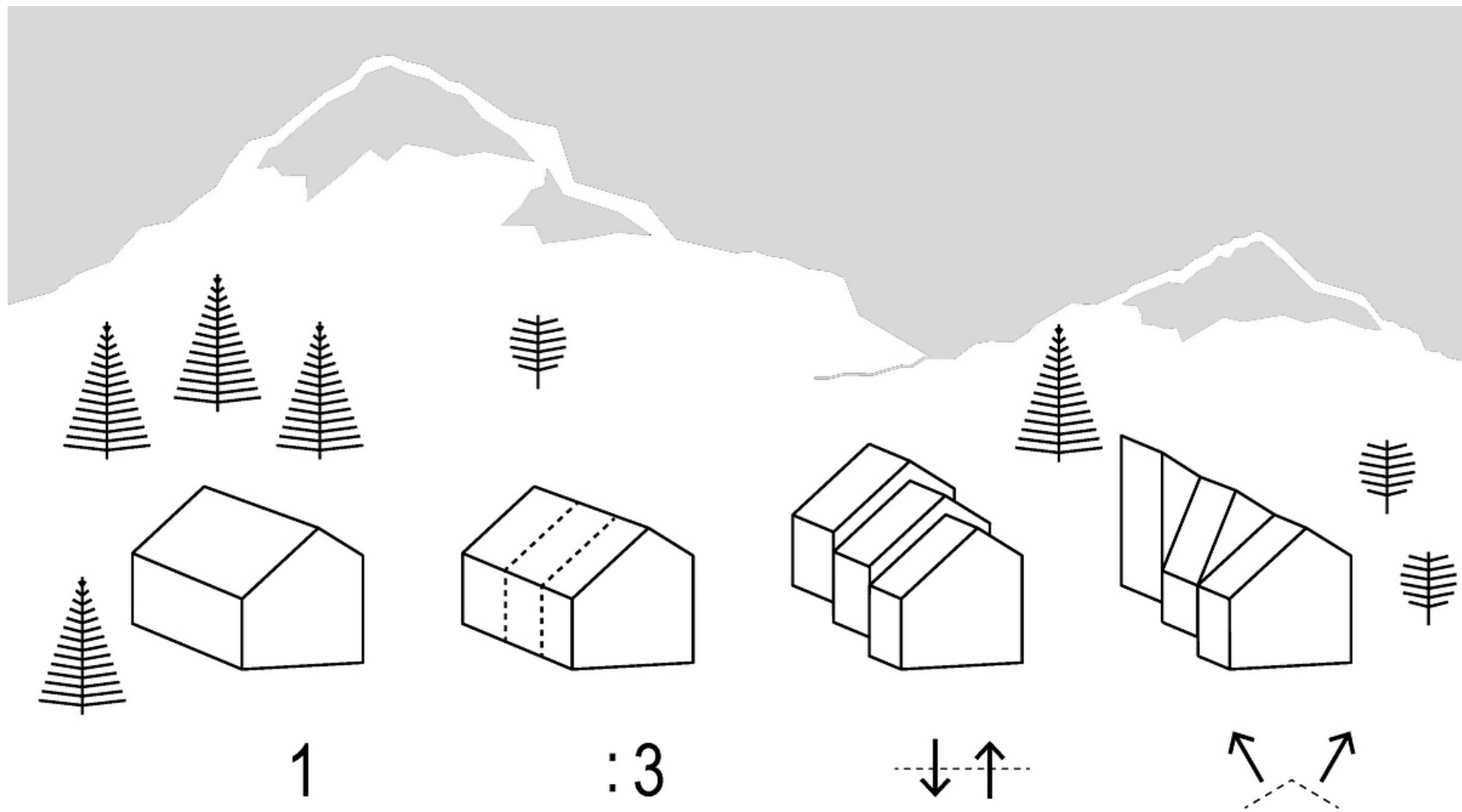
INTERIOR

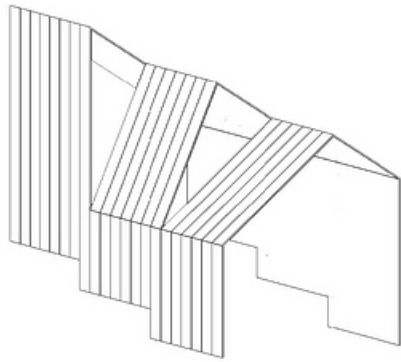


INTERIOR

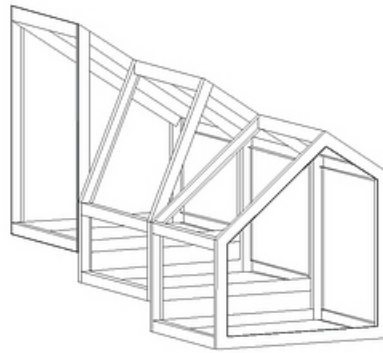


CONSTRUCTION

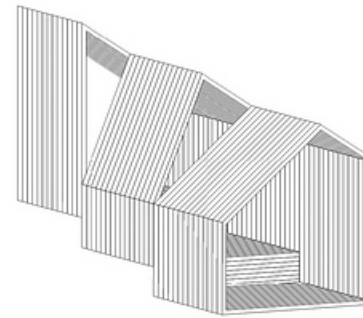




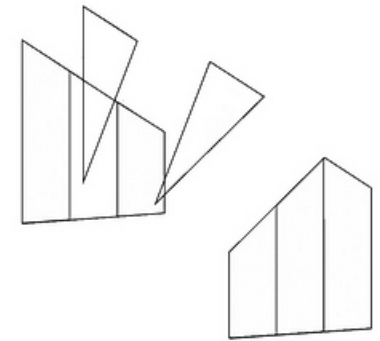
① OUTER SHELL:
CONCRETE PANELS



② STEEL STRUCTURE:
C SECTION



③ INTERNAL SHELL:
LARCH TIMBER PANELS



④ OUTDOOR FRAMES:
TRIPLE GLAZED STRUCTURAL GLASS

STRUCTURAL PROCESS